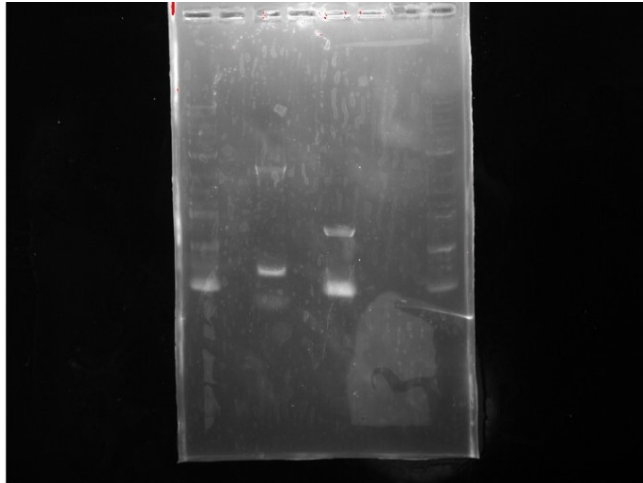


7/10/17

Monday, July 10, 2017 2:55 PM

GIBSON ASSEMBLY POSITIVE CONTROL:

Ran PCR reaction again since previous primers were incorrect (they were amplifying in the reverse direction).



5.2 log DNA ladder was used.

Multiple bands in each. This is unfortunate. But the biggest bands look like they are the right size!

You can cut them out and do a gel extraction, or try your PCR again with different conditions to see if you can get a single band

INTERLAB STUDY:

Transformed plasmids from Kit Plate 6 into DH5 alpha cells for the interlab study

LAB MAINTENANCE:

Made new LB media