

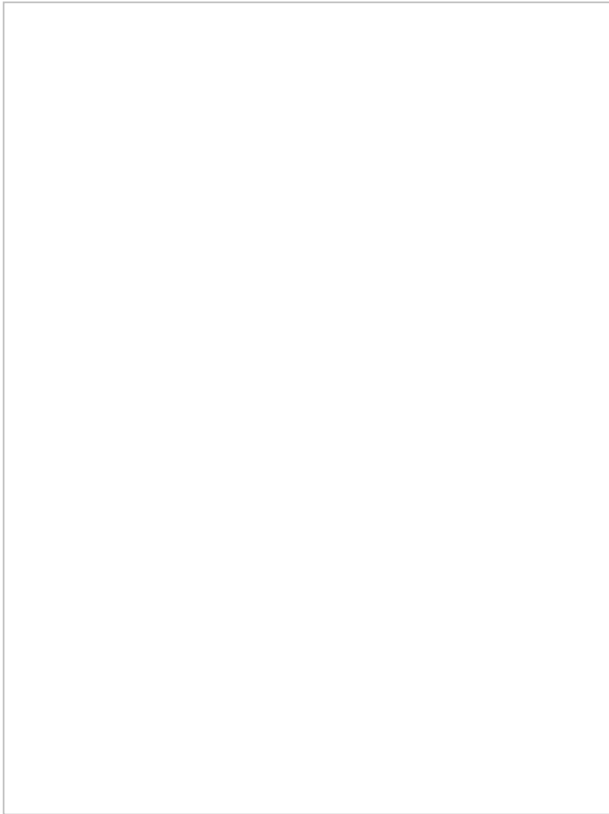
8/22/17

Monday, August 28, 2017 4:51 PM

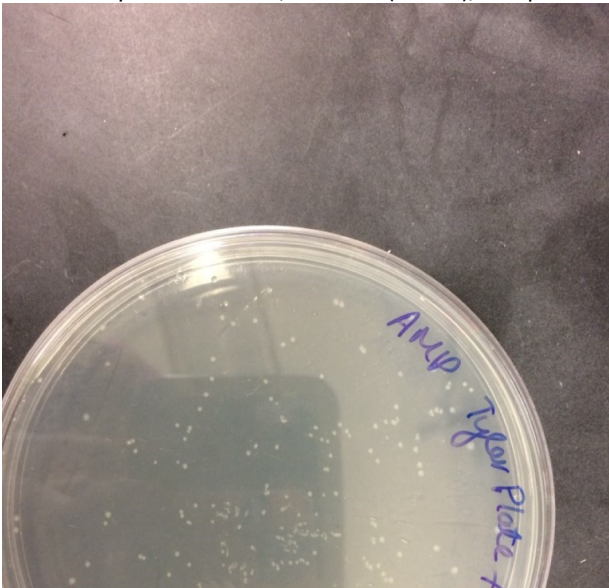
Who's in Lab: Ayesha, Ana, Nathan

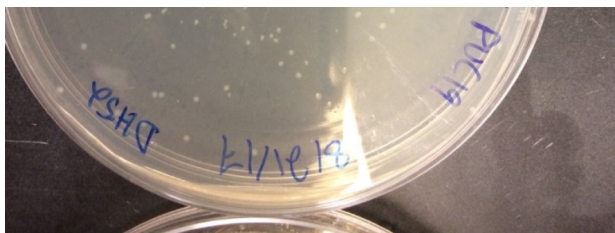
The conclusion from the tests done on 8/21/17 indicated that our AMP plates were the issue and our DNA and procedure worked perfectly fine.

Combo 1: Tyler's AMP Plate, Tyler's DNA (PET15b), Competent cells made on 8/16/17

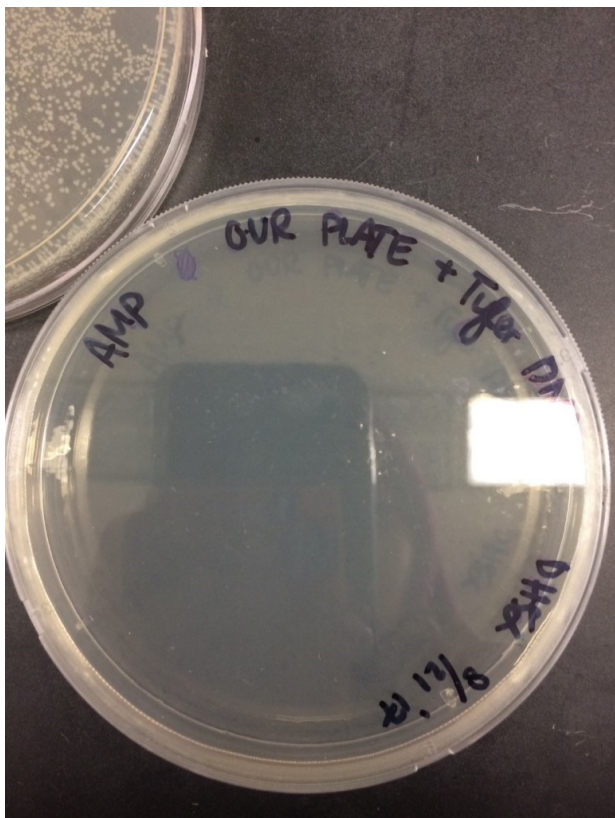


Combo 2: Tyler's AMP Plate, Our DNA (PUC19), Comp cells.





Combo 3: Our AMP plate, Tyler's DNA, Comp. Cells.



Hence, we made new CAM and AMP plates for the interlab study under Michelle's guidance.

0.5 mL of AMP was added to 500 mL of LB media and 0.5 mL of CAM was added to LB media.

Color Code: Blue is for AMP Green is for CAM

The date is written on the packets on which these new plates were stored. The packets can be found in the 4 deg fridge.

Analyzed sequencing from YCP +JOE Gibson Assembly product made on 8/1/17.

We sent the YCP+JOE Gibson Assembly Product to the UIUC Core Sequencing Facility on 8/14/17 with the primers specific to the YCP gene sequence and not to the vector JOE.

The results are as follows:

19 gaps on one end (Forward side of sequence) and 14 gaps on the other end (Reverse side sequence). These gaps are likely due to sequencing errors or trace read errors by the computer.

